

Course Descriptions - offered this year

CHIP CARVING (KARVESKURD)

Chip carving is a style of wood carving in which chip carving knives are used to remove particular 'chips' of wood from the project in a single piece. Patterns can be of a free form style or based on simple geometric figures, such as triangles, circles, simple lines and curves.



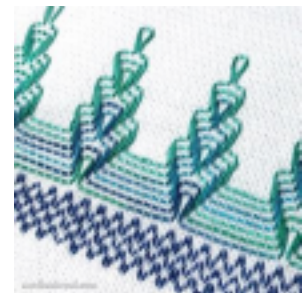
ROSEMALING

Rosamaling, or rosemaling is the name of a traditional form of decorative folk art that originated in the rural valleys of Norway. Rosemaling in Norway originated in the low-land areas of eastern Norway particularly in the Telemark and Hallingdal areas. Rosemaling is a style of Norwegian decorative painting on wood. Rosemaling designs use C and S strokes and feature scroll and flowing lines, floral designs, and both subtle and vibrant colors. Script lettering, scenes, animal and human figures may also be included.



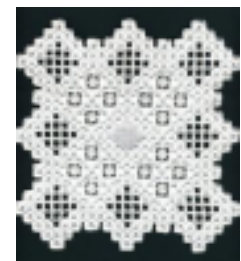
SWEDISH WEAVING

Swedish Weaving is also known as Huck Weaving, Huck Embroidery, Huckabuck, or just plain Huck. It is a technique of sewing that is done on one side of the fabric. The needle never pierces the fabric. ... You can make beautiful Afghans with Monks cloth and Swedish Weaving.



HARDANGERSOM

Traditional Hardanger embroidery is very geometrical in form – using combinations of several basic shapes such as squares, rectangles, triangles, diamonds, hearts – and involves counted thread stitches, drawn thread work and some pulled thread embroidery.



Courses this year offered by the Viking group

Drop spinning



A hands on tutorial to drop spindle spinning for complete beginners. You will learn everything you need to know from attaching the fiber, to finishing your yarn!

This course comes with a drop spindle, and 100 grams of raw wool to begin spinning.

Tablet Weaving



Tablet weaving (often card weaving in the United States) is a weaving technique where tablets or cards are used to create the shed through which the weft is passed. Most tablet weavers produce narrow work such as belts, straps, or garment trims. In this course, you will learn how to weave and be introduced to the historical supplies used, while using easier to obtain modern materials to create your own tablet woven belt or decorative trim.

Pottery

In this class, we will introduce you to making pottery the way the Vikings did - No pottery wheels or expensive tools - but instead by using the coiling method. This class will supply you with enough clay to make your own viking age pottery cup. You can then air dry your cup, or it can be fired in an open fire - depending on the weather.



Clothing Making



In this class, you are introduced to pattern drafting and Viking age clothing making. You may create either a Viking age Tunic style shirt, or a Viking age dress for everyday wear. We will help you draft your pattern for this item of clothing, and assist you to sew that item. Sewing machines are supplied, but the number of these machines are limited and it may help to bring our own if you have one!

Please Note: Materials supplied for this course are limited. If you are wanting to make a piece of clothing

in a certain colour or with a specific fabric you may need to supply your own. Materials needed
Tunic - 2-3 metres of linen. In order to measure how much fabric you need you need to take two

measurements. First, Measure the widest part of your chest or Stomach

- if this number is below 60: measure from the nap of your neck to your knees and times this by 2 This number is your length of fabric required. Add a few inches for a hem. -If this number is above 60 but below 90 - take the same measurements as above but instead of times by 2 - times by 3.

Dress - 3-4 Metres of Linen. Repeat the Measurements above, but instead of to your knees - measure to the floor.

-Hoods - .5 to 1 metre of fabric - Tunic (2-3 metres) - Dress (3 - 3.5 - metres)

Leatherworking



Birka bags

For Leatherworkers of all skill levels - Learn to create an impressive pouch based on archeological finds from birka. This belt pouch is a beautiful leather bag, made to hang on your belt and hold things close. The leather for this pouch is pre-cut, but you will have to learn to assemble the pouch, and create your own stitch marks using a leatherworking awl. This course comes with all the materials to create one pouch.